

Lincoln Orienteering
Group
NEWSLETTER JAN '94

* Secretary:
Martin Wheeler
5 Laburnum Close
North Hykeham
Lincoln
Tel. 687664

* Newsletter Editor:
John Bennett
12 Hillside Avenue
Lincoln
Tel. 541932



SROC NE 8 - BLAMWITH & TORVER		6.8km		340m
W19A K39L K35S		C.O.S.E.H.		
▽				
1	118			○
2	149	↑	FT	2.0
3	160	↑	FT	2.0
4	167			○
5	183			
6	144			
7	109			
8	102	+		○
9	154	FT		2.5
10	147			○
11	135	▲		0.8
12	106	+-		
○-----330m----->				
13	117	→		
○-----150m----->				

Course closes at 15 00hrs

News

HAPPY NEW YEAR.....HERE'S TO GOOD ORIENTEERING IN '94

The pace of change is pretty slow generally in Lincolnshire, and it's even slower in LOG, but 1994 sees a different hand on the newsletter. After many years of wearing so many hats his head was starting to wear out, Martin has left the editorial chair to concentrate on being JUST the club secretary. Many thanks to Martin for all his hard work, he is going to be quite an act to follow.

This edition has by necessity become a bit of a one man show, but please don't let it stay that way, your contributions on any subject vaguely connected with orienteering will be welcomed(if not demanded)!

BOURNE WOODS UPDATE.....

On the day that England's rugby union players were humbling the mighty All Blacks four LOG members carried out an exploratory visit to Bourne Wood. What we found was enough to warm the cockles of an orienteer's heart. The wood is about the same size as our beleaguered Stapleford, with a good path/ride network. The blocks are very varied, with some dense undergrowth in places, but great runnability in others. There are many clearings of different shapes and sizes, lots of water features from ditches to large ponds, and wait for it... contours! The race is on to be the first LOG planner to be able to use the control description re-entrant. There are also sculptures in the wood, including a totem pole, and the resident deer herd includes a rare albino. Basically it all looks very promising, and pending permission from the various landowners we hope to have a completed map by the end of the year. We'll need volunteers to help with the surveying, but the actual cartography will be an outside job. Watch this space.....

STAPLEFORD WOODS

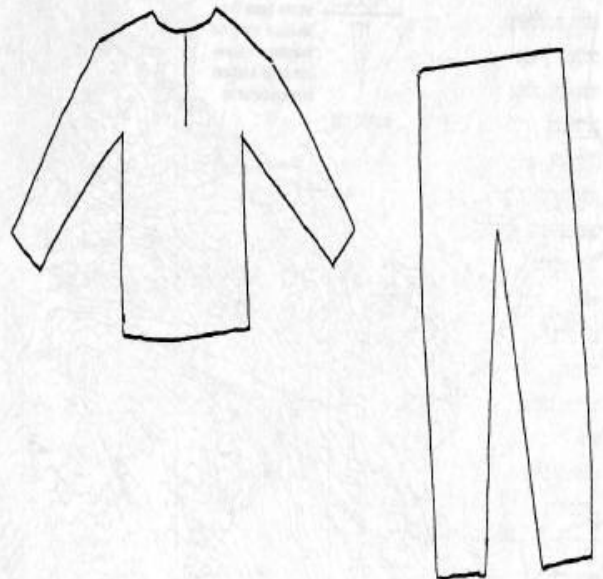
As a permit for gravel extraction has yet to be granted, there should be time to hold a few more events there, so we are looking to update the existing map. It is still a lovely wood, and is probably more runnable now than it's ever been.

THE OSTLERS.....An irreverent look at the ups and downs of 1993

- BEST 'O' EVENT.....ROYAL DEESIDE, possibly the best ever orienteering in Britain.
 BEST INDIVIDUAL.....YVETTE HAGUE, superb bronze medal in the World Championships.
 BEST TEAM.....BRITISH MEN'S RELAY SQUAD,silver in the World Champs.
 MARTYR TO THE CAUSE....GILLIAN WHEELER,name that injury!
 BACK to BASICS.....IAN DURRANT/JOHN BENNETT,say no more.
 WORST WEATHER.....BRADGATE PARK,webbed feet were a help.
 BEST NEWCOMER.....BOURNE WOOD,let's hope it can stand up to the hype.
 DREAM TICKET.....SPECTACLES+NO VISOR+RAIN=COCK-UP
 (very embarrassing at Brit. Champs!)

NEW KIT/CLUB COLOURS FOR LOG?

Our present kit(dark green with maroon stripes on chest and side of legs) has not proved too popular recently, this is your chance to do better. Subdued or loud? traditional or lycra? Be creative in the blanks below, and send to Me, this is serious!



LATE NEWS FOLLOWING THE COMMITTEE MEETING ON 20th JAN

Jane Rawlings will be leading a publicity drive around local youth groups, Ian Durrant is producing some 'fliers' as part of the same thing.

EMOA are putting money forward to map several schools in the area.

The new Hartsholme Park(Lincoln) map and permanent course will now be officially opened at an inaugural event on May15th. Details are not complete, but it will probably include an East Midland schools league event up to a green course, plus a wheelchair event. We hope to make it a real fun day.

DICTIONARY CORNER-ORIENTEERING JARGON EXPLAINED!

Indistinct path..invisible path, except on the map.
Seasonal paths..All too visible, but never on map.
Ditch..a technical move to lose the person following you.
Thicket..the person following you.
Hide..the next step if the ditch doesn't work.
Fight..the drinks at the finish have run out again.
Crag Foot..a medical condition caused by dodgy trainers.
Clearing..area of runnable wood surrounded by runnable wood.
Marsh..the run in to the finish.
Gully..a servant used by elite competitors.
Spur..worn by elite competitors to encourage their gully.
O Suits..anything you don't mind getting ripped to bits.
Mesh Top..the result of falling into brambles.
Gaiters..found in marshy areas, all mouth and teeth.
Bramble Bashers..tractor with flame thrower attachment.
Start Kite..the only one you'll see for a long time.
Contours..sorry I've never seen one, just a wild rumour.
Re-entrant..another mythological creature.
Uncrossable Dyke..always found between you and the control.
Lycras..lumpy creatures, distinctive plumage, often trying to be far too serious for their appearance.

WARNING.....IF YOU DON'T WANT ANOTHER DICTIONARY CORNER SEND ME SOME COPY NOW!

NEXT NEWSLETTER.....EXCUSES FOR ALL, 'IT WASN'T MY FAULT'

FIXTURES, full details not in yet

MARCH

27th LEI colour coded Benscliffe

APRIL

10th NOC colour coded Thieres Wood

23rd DVO badge event Chatsworth

Most fixtures have registration between 10.00 and 12.00

Colour coded events are open to everyone regardless of age, experience or level of fitness. You choose your course ranging from a White at 1.5km (all on paths / tracks) to a Blue or Brown (long and difficult).

Please note:

People entering Badge & National events must be BOP members. Most of these events require pre-entry using the standard entry form which usually accompanies the entry details

People take part in Orienteering events at their own risk. Enjoy yourself but do take care.

There will be club instructor/coach courses in the area sometime this year. Details when we get them, but they will be open to anyone and normally take place on two consecutive Saturdays.

Badge/Colour coded Awards.....

Clare Forster.....Yellow

Ian Hudson.....Bronze

John Bennett.....Gold

We welcome new members for this year....

Lincolnshire Army Cadet Force

Cath Scoffield, Lincoln